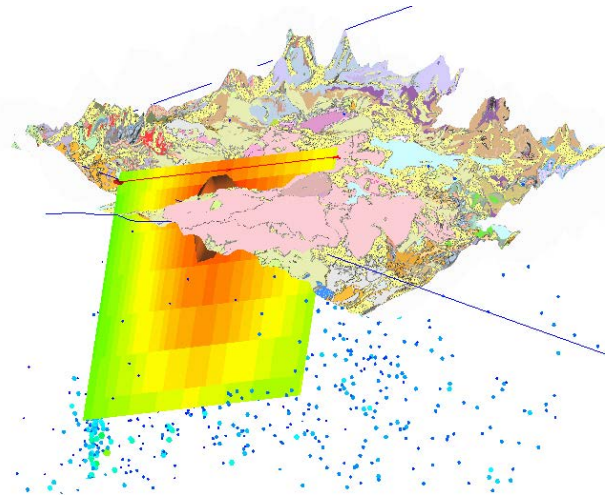
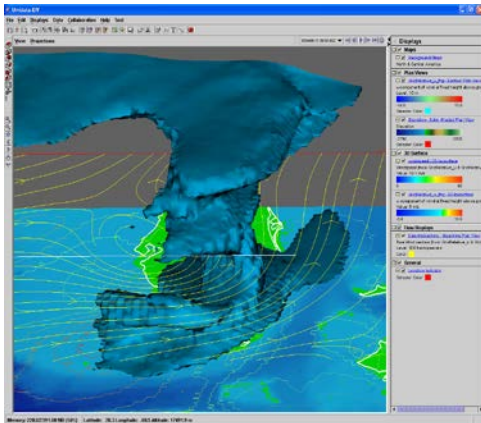


What is the IDV?

Unidata's Integrated Data Viewer (IDV) is a freely available, multiplatform visualization and analysis tool for interdisciplinary geoscience data. The IDV brings together the ability to display and work with a wide range of data including satellite imagery, gridded data, observations, and radar data, all within a unified interface.



Supported Data Formats

- Access to data on ADDE, OPeNDAP and THREDDS servers
- Georeferenced netCDF data (CF, NUWG, WRF, IOAPI conventions)
- Common atmospheric formats (GRIB, satellite, radar, GEMPAK, Vis5D)
- GIS data (shapefiles, DEM, WMS)
- GoogleEarth KML/KMZ
- Miscellaneous (Web Cam, HTML, Quick Time)

IDV Features

- 2- and 3-D data displays
- Interactive probes for dataset exploration
- Parameter readouts
- Vertical profiles
- Time/height displays
- A rich set of analysis capabilities
- Interactive and script based generation of image, movie, PDF and KML/KMZ products
- Extensible framework
- Bundling mechanism for saving state
- Client/server data access
- Easy configuration through a plugin facility
- Integrated documentation



unidata

Who Uses the IDV?

In addition to Unidata's traditional atmospheric science user base, the IDV attracts users from the oceanographic and solid earth sciences, and is increasingly used as the visualization tool of choice during field projects.

Want More Information?

Visit <http://www.unidata.ucar.edu/software/idv>

